

East Port Angeles Paving

The westernmost paving segment stretches from East Kolonels Way to Shore Road in Port Angeles. The following improvements will address safety concerns in the near-term.

1 East Kolonels Way intersection improvements

- Addition of a fourth crosswalk.
- New south sidewalk.
- Curb ramp upgrades.
- Longer and wider transit pull-out on the north side.
- Dedicated bike lanes with painted two-foot-wide hatched buffer.
- Removal of the eastbound right-turn lane to Westport Yachts, shortening the highway crossing distance.

Preliminary cost estimate: \$1.9 million.



2 Strait View Drive repurpose highway shoulders

- Highway edge line replaced with a more visible double white line.
- New Olympic Discovery Trail wayfinding sign.

Preliminary cost estimate: \$300,000.



3 Safety Component: high friction surface treatment

- High Friction Surface Treatment (HFST) will help vehicle tires grip the pavement in wet weather.
Preliminary cost estimate: \$2 million.



4 Morse Creek curve median extension

- Extend the existing median towards Deer Park Loop.
- Harden the median with either concrete or landscaping.
- Lowers speeds approaching a sharp curve.
Preliminary cost estimate: \$1.3 million.



Carlsborg and Sequim Area Paving

The eastern portion of the paving work stretches from Kitchen-Dick Road near Carlsborg to Simdars Road in Sequim. The following improvements will address safety concerns in the near-term.

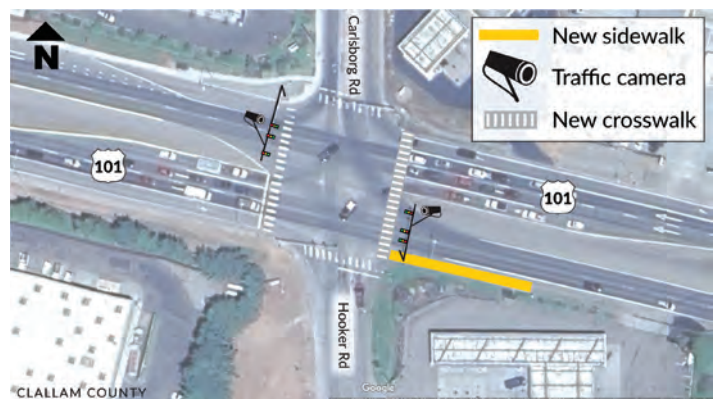
5 Repurpose highway shoulders for bicyclists and pedestrians

- New highway shoulder markings include two-foot-wide buffer with white hatch marks.
- Added safety for those who walk, cycle, roll, or use transit.
- Westbound US 101 from Boyce Road to Gilbert Road.
- Eastbound US 101 from Boyce Road to Taylor Cutoff Road.
Preliminary cost estimate: \$800,000.



6 Carlsborg Road intersection improvements

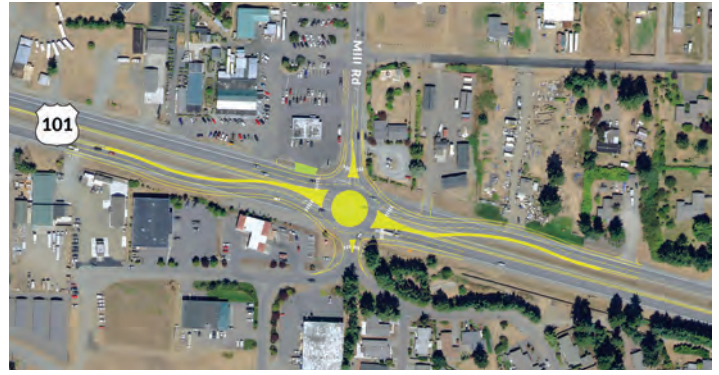
- New crosswalk on the east side of the intersection.
- Dedicate landing segment for the transit stop and curb ramp upgrades.
- Reduced crossing distance.
- Closed-circuit video camera will enhance traffic management at the traffic signal.
Preliminary cost estimate: \$1 million.



7 Mill Road two-lane roundabout

- Improves crossing conditions in a populated area.
- Serves housing developments for older adults and shopping locations.

Preliminary cost estimate: \$6.5 million.



8 Taylor Cutoff Road two-lane roundabout

- Two-lane roundabout will improve the level of service for traffic in all directions, reducing delays from almost 10 minutes to five seconds.
- Roundabout will accommodate growth in the area.

Preliminary cost estimate: \$6.5 million.



9 River Road ramp crosswalk and sidewalk improvements

- Sidewalks replaced to meet American Disabilities Act (ADA) standards.
- Traffic signal changes will reduce vehicle conflicts with pedestrians and bicyclists.

Preliminary cost estimate: \$1.1 million.



10 Sequim Avenue ramp crosswalk and sidewalk improvements

- Upgraded sidewalk ramps to meet ADA standards.
- Crosswalks added to Sequim Avenue.

Preliminary cost estimate: \$600,000.



Title VI Notice to Public

It is the Washington State Department of Transportation's (WSDOT) policy to assure that no person shall, on the grounds of race, color, national origin, as provided by Title VI of the Civil Rights Act of 1964, be excluded from participation in, be denied the benefits of, or be otherwise discriminated against under any of its programs and activities. Any person who believes his/her Title VI protection has been violated, may file a complaint with WSDOT's Office of Equity and Civil Rights (OECR). For additional information regarding Title VI complaint procedures and/or information regarding our non-discrimination obligations, please contact OECR's Title VI Coordinator at (360) 705-7090.

Americans with Disabilities Act (ADA) Information

This material can be made available in an alternate format by emailing the Office of Equity and Civil Rights at wsdotada@wsdot.wa.gov or by calling toll free, 855-362-4ADA(4232). Persons who are deaf or hard of hearing may make a request by calling the Washington State Relay at 711.

Project Contact

Joe Calodich
Active Transportation Planner,
joe.calodich@wsdot.wa.gov