

Table of contents

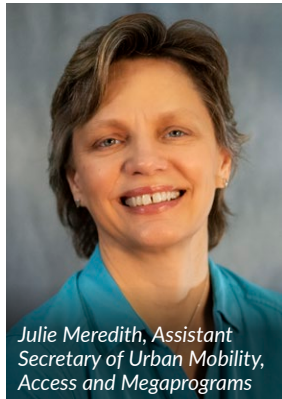
Megaprogram stories	1-2
I-405/SR 167 Program	3-4
SR 520 Program	5-6
Gateway Program	7-8
Megaprogram info & projects .	9-10

Megaprograms

Construction Continues Across Central Puget Sound Megaprograms and Introducing a New Mega-region Program

A message from Julie Meredith

This newsletter is our tool for communicating upcoming contracting opportunities. We share this newsletter through our external partners and community networks, but please share it widely with your networks to help us reach the wider community.



Julie Meredith, Assistant Secretary of Urban Mobility, Access and Megaprograms

It's hard to believe that we're already well into 2024 and the busy summer construction season is approaching. Several of our Central Puget Sound Megaprograms have projects under construction or will be breaking ground.

In March, WSDOT awarded the SR 520 Portage Bay Bridge Project to Skanska and construction is planned to begin in August. This is an exciting milestone, as it represents the final project under the SR 520 Program.

The I-405/SR 167 Program received funding from the legislature for WSDOT to work with stakeholders on practical solutions and updated cost estimates to support the following projects in moving forward: SR 167 Southbound ETL Extension, North 8th Street Direct Access, and Interchange Improvements in Bellevue (I-405 Renton to Bellevue Contract 3).

In 2024, the new Cascadia High-Speed Rail and I-5 Program will begin early work for an I-5 Master Plan and future high-speed rail planning. Cascadia High-Speed Rail is a project in partnership with Oregon and British Columbia, and this program is committed to sharing planning and design contracting opportunities with the Minority, Small, Veteran, and Women's Business Enterprise (MSVWBE) community, as well as any future construction contracting opportunities.

Apex Electrical Group to Work on Portage Bay Project



Marcus Cola of Apex Electrical Group

Marcus Cola's company, Apex Electrical Group, is in the process of developing the scope and nature of work it will perform under SKANSKA, the prime contractor on the Portage Bay project. "It's such a large project. There's a lot to incorporate as far as capacity, scope, and bonding." The company, which was founded in November, 2020, has six WSDOT projects underway, including installing fiber optics across the SR 520 bridge. Though Apex has had several contracts with WSDOT, getting a foot in the door was not easy. "It was very difficult to get in with WSDOT," Cola advises. "Not only did we have to fill out multiple questionnaires, we had to show we had experience on WSDOT projects and get references from those projects." Timing is crucial. Bonding and capacity need to match project openings. "Attending all of WSDOT's networking events is also important," said Marcus Cola.

Apex Electrical Group is certified as a disabled veteran owned enterprise, a Disadvantaged Business Enterprise (DBE), Minority Business Enterprise (MBE), and has just been certified by the SBA and accepted into the 8(a) program. Cola says he started the company because he wanted to be more than a number. He wanted healthy mental space, personal growth, and a chance to mentor others. He also wanted to reshape the way minority and disadvantaged

Megaprograms

Apex Electrical Group (continued)



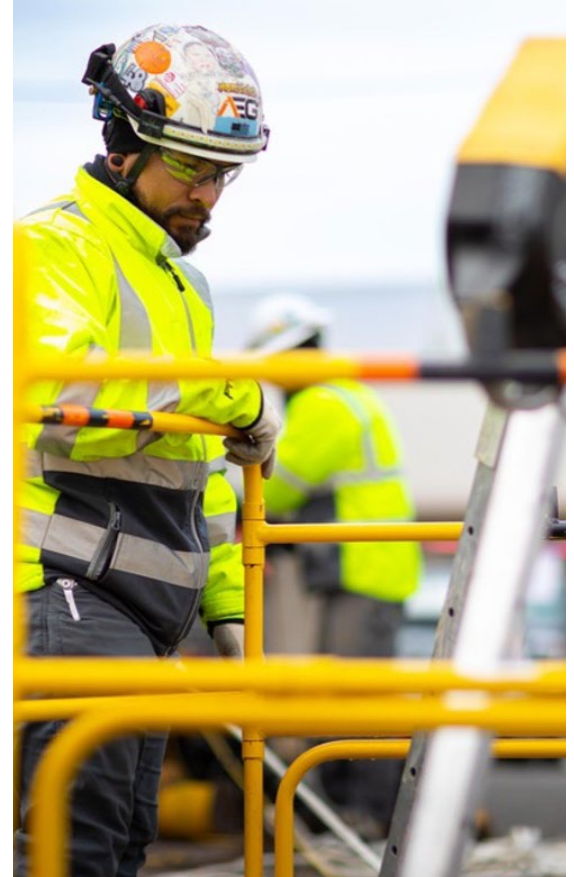
businesses are stereotyped—to show that minority companies have the talent and technical knowhow to accomplish projects, not just fulfill goals. The issue extends to negotiating. “It’s been very difficult to get our pricing without scrutiny. They (many big companies) assume because we are minority, we’ll be cheaper.” And, Cola adds, Apex is always “looking for ways to bring on other minority contractors.”

When he’s not working, Cola is an avid mushroom hunter, foraging for culinary mushrooms. “That’s my biggest hobby along with forest management. My wife and I own 20 acres of designated forestry land near Graham. We live there, we maintain the forest.” They also teach others to tend the forest and to know which native plants and berries are edible.

Contact: Marcus Cola | (509) 592-3694 | mcola@apexelectricgroup.com



Marcus and his team pull in medium voltage to power a project



Number of MSVWBE and DBE firms for each Megaprogram

All programs are working to meet their voluntary and mandatory goals for MSVWBE and DBE participation. The chart at right shows the total number of current and past MSVWBE and DBE firms contracted on each program. Please refer to the individual program reports for more information about MSVWBE and DBE participation.

I-405/SR 167 Program

27 PGM&E*
 284 Construction

311

SR 520 Program

28 PGM&E*
 154 Construction

178 (Four firms worked in both design and construction)

Puget Sound Gateway Program

28 PGM&E*
 72 Construction

96 (Four firms worked in both design and construction)

*PGM&E = Program management and engineering

For More Information

Julie Meredith
 Assistant Secretary of Urban Mobility,
 Access and Megaprograms
Julie.Meredith@wsdot.wa.gov
 206-770-3568

Regina Glenn
 Diversity and Inclusion Manager,
 WSDOT Megaprograms
Regina.Glenn@wsdot.wa.gov
 425-503-7212

Diversity and Inclusive Contracting

Quarterly Progress Report: January–March 2024

I-405/SR 167 Program

Construction progress and upcoming contracting opportunities

I-405, Northeast 85th Street Interchange and Inline BRT Station Project

Graham and WSDOT kicked off construction on the I-405, Northeast 85th Street Interchange and Inline Bus Rapid Transit Station Project in September 2023. Graham is focused on working with Small Veteran Business (SVB) and Minority Women Business Enterprise (MWBE) firms to increase their participation and foster mentorship. Here are several ways you can learn about bidding opportunities with Graham on this project:

- Website: graham.equityincontracting.infocommunity.org. The Contracting Opportunities page will post up-to-date opportunities and anticipated procurement schedule.
- On the website's home page, complete a registration form, and we'll add you to Graham's subcontractor/supplier database to receive email notices of bidding opportunities matching your services.
- Attend events hosted by Graham. To receive an invite to a future event, visit the website's News and Events page.
- Upcoming scopes of work include aggregates and concrete, bridge anchors and bearings, dewatering, lumber supplies, logging, large sign structures, and stream diversion materials.

To learn about these opportunities, contact:

- Gin Hooks, Outreach Coordinator, gin@zanninc.com, 206-371-7783
- Suzanne Arkle, Inclusion Manager, suzanne@zanninc.com

SR 167 Corridor Improvements Project

Crews with Northup began early construction activities in fall 2023. WSDOT expects to begin substantial construction on this project in spring 2024. The project will open to traffic in 2025.

Potential scopes of work include upgrading the existing toll system, new ITS and illumination installations, minor shoulder widening at two new CCTV sites, pavement rehabilitations at spot locations, and maintenance of traffic.

Find more information about the project here:
bit.ly/3Q2kk2S

To learn about these opportunities, contact:

- Vicky Schiantarelli, Inclusion Manager, vicky@schiantarelliassociates.com, 206-369-6740

I-405, Brickyard to SR 527 Improvement Project

Skanska started early construction activities in fall 2023 and expects to begin substantial construction in spring 2024. The project will open to traffic in 2028. Bid packages to be released in 2024 include bridge barrier, crack sealing, building painting/sealing, doors and hardware, equipment rentals, fencing and metal railing, gates, glazing, handrails, joint seals, masonry, MSE walls, signage, tile, toilet accessories, trucking, and more.

Skanska hosts "Office Hours" with SVB/MWBEs interested in doing business with Skanska every third Monday of the month at Tabor 100 and is open to scheduling additional office hours. Reach out to Courtney McGhee, DBE Compliance Coordinator, at 206-817-5937 to schedule.

- Find more information about the project: bit.ly/Brickyard-SR-527
- Find more information about bid opportunities: bit.ly/bidbrickyard

To learn about these opportunities, contact:

- Vicky Schiantarelli, Inclusion Manager, vicky@schiantarelliassociates.com, 206-369-6740

I-405, Renton to Bellevue Widening and Express Toll Lanes Project

WSDOT and design-builder Flatiron Lane Joint Venture (FLJV) continue to make construction progress on their contract. Heavy construction work is underway and will continue along the outside of I-405 in both directions.

Upcoming work includes sign and sign structure removal and installation, post-tensioning, and steel installation. Find more information about upcoming events here: fljvwa405project.com

To learn about these opportunities, contact:

- Danica Mason, FLJV Inclusion Manager, danica@redteam-go.com, 206-947-1992

For More Program Information

Lisa Hodgson, P.E., Program Administrator, 206-410-0401,
Lisa.Hodgson@wsdot.wa.gov

I-405/SR 167 Program web link

wsdot.wa.gov/construction-planning/major-projects/i-405sr-167-corridor-program

I-405/SR 167 Program

Diversity / Apprenticeship / Training

Thru 4/26/24

Shaded projects are physically complete.

Individual companies certify on multiple TYPES (M, S, V, W) and are calculated based on contract goals / expectations, these areas are stacked.

Data below is provided to WSDOT by its project contractors. Percentages and dollars are based on amounts paid to date.

PROGRAM MANAGEMENT AND ENGINEERING (PGM & E)														
DBE	Disadvantage Business Enterprise (DBE)	Percentage			Companies		Data Date	Duration						
		Goal	Current	#	Applied (\$)	Paid (\$)								
		I-405/SR 167 Corridor GEC Y-8092	N/A	12.48%	11	\$22,056,470				\$22,056,470		March 2002 - August 2016 (N/A - No Goal)		
DBE Program Subtotal ¹		12.48%	11		\$22,056,470									
MSVWBE	Minority, Small, Veteran, Women Business Enterprise (MSVWBE)	Percentage			Companies		Data Date	Duration						
		Goal	Achieved	#	Stacked (\$)	Paid (\$)								
		I-405/SR 167 Corridor GEC Y-11873	TYPE	M	10%	5.68%				8	\$8,331,526	\$8,261,200	4/26/2024	August 20, 2016 - April 26, 2024
				S	5%	16.35%				16	\$23,965,486	\$2,547,766		
				V	5%	2.98%				1	\$4,361,890	\$4,361,890		
				W	6%	6.57%				6	\$9,628,924	\$9,549,921		
Agmt		31.58%	31	\$46,287,826	\$24,720,777									
MSVWBE Program Subtotal ²		16.87%	31.58%	16	\$46,287,826	\$24,720,777								

PGM & E TOTAL ¹			27	\$46,777,247
---------------------------------------	--	--	-----------	---------------------

CONSTRUCTION

MSVWBE, SVBE, MWBE	Percentage			Companies		Data Date	15% Apprenticeship Requirement		Training Hours ³		
	Goal	Achieved	#	Stacked (\$)	Paid (\$)						
	C8665: SR 167/8th ST E to S 277th ST - SB HOT Exten.	14%	9.02%	26	\$4,933,268		\$4,527,035	6/30/2018		15.1%	12/31/2017
C8886: I-405/SR 527 to I-5 PUSL (Northbound Only)	15%	10.20%	14	\$743,716	\$743,716	5/17/2018	16.7%	5/31/2018	NOT REQUIRED		
C8811: I-405/SR 167 Interchange Direct Connector	26%	9.03%	58	\$10,462,787	\$11,583,532	11/4/2019	16.8%	9/30/2019	NOT REQUIRED		
C9242: I-405/Renton to Bellevue - Widening & ETL Awarded Flatiron-Lane JV 10/1/2019 Award amt \$704,975,000 NTP 10/30/2019	TYPE	M	10%	5.54%	46	\$39,068,645	\$36,309,796	4/30/2024	10.70%	4/30/2024	NOT REQUIRED
		S	5%	14.91%	117	\$105,117,379	\$41,428,995				
		V	5%	1.52%	15	\$10,739,033	\$10,739,033				
		W	6%	3.96%	26	\$27,904,084	\$27,575,677				
		Project		25.93%	204	\$182,829,141	\$116,053,501				
C9573: I-405/NE 132nd Street Interchange Awarded Graham 7/29/2021 Award amt \$50,444,111 NTP issued: 9/7/2021	TYPE	M	10%	7.50%	8	\$3,785,657.41	\$3,785,657	4/30/2024	14.20%	4/30/2024	NOT REQUIRED
		S	5%	21.56%	26	\$10,875,536	\$4,246,151				
		V	5%	3.79%	4	\$1,911,107	\$1,911,107				
		W	6%	1.19%	10	\$602,537	\$932,620				
		Project		34.05%	48	\$17,174,837	\$10,875,536				
C9732: I-405/NE 85th Street Interchange Awarded Graham 12/16/2022 Award amt \$234,432,000 NTP issued: 2/3/2023	TYPE	M	10%	0.07%	4	\$172,762	\$1,337,546	4/30/2024	7.79%	4/30/2024	NOT REQUIRED
		S	5%	0.15%	5	\$342,804	\$3,495,478				
		V	2%	0.05%	1	\$106,997	\$717,568				
		W	6%	0.03%	2	\$79,344	\$78,126				
		Project		0.30%	12	\$701,907	\$5,628,718				
C9727: I-405/Brickyard to SR 527 Awarded Skanska 7/27/2023 Award amt \$834,000,000 NTP issued: 9/18/2023	TYPE	M	10%	0.00%	0	\$0	\$0	4/30/2024	12.24%	4/30/2024	NOT REQUIRED
		S	5%	2.41%	5	\$897,950	\$897,950				
		V	3%	0.17%	1	\$63,400	\$63,400				
		W	6%	0.00%	0	\$0	\$0				
		Project		2.58%	6	\$961,350	\$961,349				
C9866: SR 167 Corridor Improvements Awarded Northrup-Elcon JV 7/14/2023 Award amt \$83,999,691 NTP issued: 9/6/2023	TYPE	M	10%	0.99%	6	\$833,751	\$0	5/29/2024	9.27%	5/29/2024	NOT REQUIRED
		S	5%	2.11%	7	\$1,773,298	\$1,773,298				
		V	3%	1.12%	1	\$940,000	\$940,000				
		W	6%	0.00%	0	\$0	\$0				
		Project		4.22%	14	\$3,547,049	\$2,713,298				
MSVWBE Program Subtotal ²		7.34%	10.61%	284	\$221,354,055	\$153,086,684					

CONSTRUCTION TOTAL ¹			284	\$153,086,684
--	--	--	------------	----------------------

I-405/SR 167 MEGAPROGRAM TOTAL ¹			311	\$199,863,932
--	--	--	------------	----------------------

¹ For DBE Program Subtotal, A&E TOTAL, CONSTRUCTION TOTAL, and I-405/SR 167 PROGRAM TOTAL; the calculation for these are based on each individual company on the I-405/SR 167 Program.

² Individual companies certify on multiple TYPES (M, S, V, W) and to eliminate duplication, the 'MSVWBE Program Subtotal' only calculates the overall %, total '# of Companies', and total 'Paid (\$)' to Companies' to date based on each individual company and total paid on the I-405/SR 167 Program (exception - highlighted cell is stacked %).

³ Once Training Goals are achieved, they are no longer tracked or reported.

Diversity and Inclusive Contracting

Quarterly Progress Report: January–March 2024

SR 520 Bridge Replacement and HOV Program

Building bridges, building diversity: SR 520's Portage Bay Project and Skanska team up

The Washington State Department of Transportation awarded the Portage Bay Bridge and Roanoke Lid Project (Portage Bay Project) to Skanska USA Civil on March 11, 2024. Construction is set to begin August 2024.

This \$1.4 billion project will replace the aging Portage Bay bridge with a seismically resilient structure and rebuild the final stretch of SR 520 over a six-year period, completing SR 520's transit-HOV improvement between the Eastside and Seattle. Other key work will include building a landscaped lid over the highway near Roanoke Park and extending the SR 520 Regional Trail across Portage Bay to connect with the City of Seattle's bicycle path network.

Diverse firms needed to join the project

This project presents unparalleled opportunities for firms specializing in design, engineering, construction, and related fields. We encourage interested consultants and subcontractors to engage with Skanska as early as possible to explore potential subcontracting opportunities.

In the third and fourth quarters of 2024, Skanska plans to release the following bid packages outlining various scopes of work:

- Boat dock relocation
- Geotechnical monitoring
- Vibration monitoring
- Temporary erosion control and stormwater management
- Medina shoreline stabilization and repair
- Utility work
- Temporary bridge work (*steel piling, structure excavation, concrete formwork, reinforcing steel, precast girders, crane rental, grinding and grooving, structural steel, miscellaneous metals, concrete barrier, steel railings, bridge drainage system, bridge bearings, waterproofing, and more.*)
- Roadway work (*site preparation, grading, clearing and grubbing, structure demolition, pavement removal, utility relocation, electrical, roadway lighting, landscaping, concrete retaining walls, soldier piles, hot mix asphalt paving, cement concrete paving, roadway barriers, pavement markings, signage, sign structures, trucking, saw cutting, concrete grinding, and more.*)

Please note that bid packages are still being developed; the list above is not exhaustive and may undergo changes. Additional bid packages will also be released in 2025 and 2026.

Interested firms are encouraged to sign up for Skanska's e-newsletter for the updates and announcements about upcoming outreach events at www.bit.ly/PNW_interestedbidders. A webpage to learn and track bid opportunities is also coming soon.



Jerry Iniguez, Skanska Vice President of Operations



Vicky Schiantarelli, Skanska Inclusion Manager

To learn about these opportunities, contact:

- Jerry Iniguez, Skanska Vice President of Operations, geraldo.iniguez@skanska.com, 951-232-3522
- Vicky Schiantarelli, Skanska Inclusion Manager, vicky@schiantarelliassociates.com, 206-369-6740

SR 520 Portage Bay Project info: wsdot.wa.gov/construction-planning/search-projects/sr-520-portage-bay-and-roanoke-lid-project

Commitment to inclusive contracting

WSDOT is committed to providing a significant share of the contract's value to diverse businesses. Like our other SR 520 projects, the Portage Bay Project includes voluntary MWBE goals. However, unlike our other projects awarded prior to summer 2022, the Portage Bay Project also has mandatory diversity goals, with a 3% enforceable contract goal for veteran-owned businesses and 5% for small businesses.

For More Program Information

Omar Jepperson, P.E., DBIA
SR 520 Program Administrator
206-409-6961, Omar.Jepperson@wsdot.wa.gov

SR 520 Program web link

wsdot.wa.gov/construction-planning/major-projects/sr-520-bridge-replacement-and-hov-program

SR 520 Bridge Replacement and HOV Program

Diversity / Apprenticeship / Training

Shaded projects are physically complete.

Individual companies certify on multiple TYPEs (M, S, V, W) and are calculated based on contract goals / expectations, these areas are stacked.

Data below is provided to WSDOT by its project contractors. Percentages and dollars are based on amounts paid to date.

PROGRAM MANAGEMENT AND ENGINEERING (PGM & E)														
DBE	Disadvantage Business Enterprise (DBE)	Percentage		Companies			Data Date	Duration						
		Goal	Achieved	#	Applied (\$)	Paid (\$)								
		Completed Agreements	8%	9.79%	8	\$23,453,492				\$23,453,492	6/30/2017	Feb. 2009 – Dec 2016		
DBE Program Subtotal ¹		9.79%	8	\$23,453,492	\$23,453,492									
MSVWBE	Minority, Small, Veteran, Women Business Enterprise (MSVWBE)	Percentage		Companies			Data Date	Duration						
		Goal	Achieved	#	Stacked (\$)	Paid (\$)								
		SR 520 Program Agreement	TYPE	M	10%	11.11%				10	\$17,857,946	\$17,857,946	3/31/2024	March 2016 - Present
				S	5%	27.84%				25	\$44,745,113	\$12,672,100		
				V	5%	0.01%				2	\$22,286	\$3,147		
				W	6%	16.16%				10	\$25,972,220	\$14,211,920		
Agmt		55.12%	47	\$88,597,567	\$44,745,113									
MSVWBE Program Subtotal ²		27.84%	55.12%	25		\$44,745,113								
PGM & E TOTAL ¹			28	\$68,198,606										

CONSTRUCTION											
DBE	DBE	Percentage		Companies			Data Date	Apprentice		Training Hours ³	
		Goal	Achieved	#	Applied (\$)	Paid (\$)		Hours % (Goal)	Data Date	Goal	Achieved
		Completed Projects ⁴	8%	8.97%	77	\$161,362,764		\$161,362,764	2/5/2019	18.6% (15% Goal)	5/26/2018
DBE Program Subtotal ¹		8.97%	77	\$161,362,764	\$161,362,764		18.6%		199,300	237,597	

MSVWBE	MSVWBE	Percentage		Companies			Data Date	Apprentice		Training Hours ³	
		Goal	Achieved	#	Stacked (\$)	Paid (\$)		Hours % (Goal)	Data Date	Goal	Achieved
		Completed Projects ⁵	Varies	32.12%	50.88%	9			\$3,623,870	15.6% (15% Goal)	11/30/2018
C9015: Montlake to Lake WA - I/C & Bridge Replacement (currently in construction)	TYPE	M	10%	6.47%	22	\$29,442,851	\$29,442,851	4/5/2024	15.1% (20% Goal)	4/5/2024	NOT REQUIRED
		S	5%	16.64%	65	\$75,782,911	\$32,014,290				
		V	5%	0.91%	9	\$4,131,265	\$3,547,549				
		W	6%	3.44%	20	\$15,663,206	\$13,580,677				
Project		27.46%	116	\$125,020,233	\$78,585,367						
C9674: I-5 Express Lanes Connection (currently in construction)	TYPE	M	10%	11.11%	7	\$7,559,923	\$7,559,923	4/4/2024	11.2% (15% Goal)	4/4/2024	NOT REQUIRED
		S	5%	20.69%	27	\$14,077,855	\$5,292,241				
		V	5%	0.27%	2	\$186,956	\$186,956				
		W	6%	1.53%	3	\$1,038,735	\$1,038,735				
Project		33.60%	39	\$22,863,469	\$14,077,855						
MSVWBE Program Subtotal ²		20.63%	28.02%	97		\$96,287,092					

CONSTRUCTION TOTAL ¹			154	\$257,649,857					
--	--	--	------------	----------------------	--	--	--	--	--

SR 520 PROGRAM TOTAL ¹			178	\$325,848,462					
--	--	--	------------	----------------------	--	--	--	--	--

¹ For DBE Program Subtotal, PGM & E TOTAL, CONSTRUCTION TOTAL (four firms worked in both PGM & E and CONSTRUCTION), and SR 520 PROGRAM TOTAL; the calculation for these are based on each individual company on the SR 520 Program.

² Individual companies certify on multiple TYPEs (M, S, V, W) and to eliminate duplication, the 'MSVWBE Program Subtotal' only calculates the overall %, total '# of Companies', and total 'Paid (\$)' to Companies' to date based on each individual company and total paid on the SR 520 Program (exception - highlighted cell is stacked %).

³ Once Training Goals are achieved, they are no longer tracked or reported.

⁴ Completed federally funded construction projects to date: Pontoons, Eastside, West Connection Bridge, Floating Bridge and Landings, West Approach Bridge North. Total percentage DBE achieved ranged from 3.83% - 14.62%, totaling 8.97% overall. Total percentage Apprentice achieved ranged from 13.7% - 21.4%, totaling 18.6% overall.

⁵ Completed state funded construction projects to date: Grass Creek, Evans Creek, Union Bay Natural Area, Truck Aprons, Eastside Culvert Repair Project. Total percentage MSVWBE achieved ranged from 0.00% - 64.74%, totaling 32.14% overall. Total percentage Apprentice achieved ranged from 12.0% - 24.1%, totaling 15.6% overall.

Diversity and Inclusive Contracting

Quarterly Progress Report: January–March 2024

Puget Sound Gateway Program

On April 5, 2024, Guy F. Atkinson Construction (Atkinson), in partnership with Jacobs, held an informational session at Tabor 100 to discuss upcoming partnership opportunities for disadvantaged business enterprises and small businesses. Karlton Daniel, Atkinson’s Community Affairs Specialist, spoke to the room about opportunities for DBEs and small businesses to subcontract with Atkinson, Jacobs and their first tier subcontractors on the State Route 509 Completion Project. Specifically, Daniel noted that Atkinson has worked with their first tier subcontractors to identify scopes of work that are manageable for and targeted to small contractors so that they can pursue and complete the work with confidence. Daniel spoke to the importance of both competitive pricing and relationship building when seeking work with first tier subcontractors and prime contractors. During the presentation, Daniel spoke about what he referred to as a “matchmaking process” to connect small and diverse businesses with first-tier subcontractors on Stage 2 of the project which was awarded to Atkinson in December 2023.



Karlton Daniel, Community Affairs Specialist at Atkinson

Stage 2 of the SR 509 Completion Project will extend SR 509 from where it currently ends at the southwest corner of the Sea-Tac International Airport to Interstate 5. The Project scope includes building the remaining two miles of the new four-lane SR 509 Expressway, a new southbound lane on I-5, five bridges, noise and retaining walls, and reconfiguring SR 509 interchanges with local roads. Atkinson is the prime contractor on this project and is working with Jacobs as the lead designer. This design-build project has a \$479 million contract value and DBE participation requirements of 15% for design and 22% for construction.

Potential Scopes of Work/Opportunities

- Aggregate Materials
- Concrete Form liners
- Engineering
- Baker Trucks
- Concrete Ready Mix
- Environmental
- Bearing Pads
- Structures
- Equipment Rentals
- Bridge Railing
- Drilled Shafts
- Erosion/Sediment Control
- Civil/Site Work
- Demolition
- Excavation
- Community Outreach
- Drainage
- Fencing
- Concrete Barrier, Temp
- Dumpster Service
- Geotextile
- Concrete Flatwork
- Electrical/Illumination
- Girders
- Concrete
- Hauling
- Painting/ Pigment Sealing
- Guardrail
- Landscaping



Subsurface Construction, a DBE that specializes in pile driving and specialty foundations, partnered with Atkinson on Stage 1b of the SR 509 Completion Project to help set noise wall panels for a replacement noise wall along I-5 in SeaTac

The best way to connect with Atkinson on the SR 509 Stage 2 project is to fill out the questionnaire on their website at atkn.com/business-with-us/trade-contractors/opportunities/sr-509-24th-188th, and follow-up with an email to Karlton Daniel at Karlton.Daniel@atkn.com and Viki Bamba at marivic.chennault@atkn.com to express interest in the project and your business’ capabilities.

For More Program Information

John White
 Puget Sound Gateway Program Administrator
 206-310-4828, John.White@wsdot.wa.gov

Puget Sound Gateway Program web link

wsdot.wa.gov/construction-planning/major-projects/puget-sound-gateway-program

Puget Sound Gateway Program

Diversity / Apprenticeship / Training

Shaded projects are physically complete.

Individual companies certify on multiple TYPES (M, S, V, W) and are calculated based on contract goals / expectations, these areas are stacked.

Data below is provided to WSDOT by its project contractors. Percentages and dollars are based on amounts paid to date.

PROGRAM MANAGEMENT AND ENGINEERING (PGM & E)								
DBE	Disadvantage Business Enterprise (DBE)	Percentage		Companies		Date Updated		
		Goal	Current	#	Applied (\$)			Paid (\$)
		SR 509 General Engineering Consultant Agreement Y-11628	15%	11.13%	7	\$539,422	\$539,422	10/30/2018
	DBE Program Subtotal (Individual Companies ¹)		11.13%	7	\$539,422	\$539,422	10/30/2018	Oct 2014 -- Oct 2018

MSVWBE	Minority, Small, Veteran, Women Business Enterprise (MSVWBE)	Percentage		Companies		Date Updated	Duration		
		Goal	Current	#	Stacked (\$)			Paid (\$)	
	Puget Sound Gateway - Program Management Agreement Y-11917	TYPE	M	4%	13.79%	4	\$ 2,777,039.22	\$ 2,777,039.22	3/29/2024
S			14%	33.96%	9	\$ 6,841,620.25	\$ 1,055,604.10		
V			0%	0.00%	0	\$ -	\$ -		
W			6%	19.97%	3	\$ 4,022,171.85	\$ 3,008,976.93		
Agmt				67.71%	16	\$ 13,640,831.32	\$ 6,841,620.25		
SR 167 General Engineering Consultant Agreement Y-11918	TYPE	M	5%	4.12%	3	\$ 2,068,723.84	\$ 2,068,723.84	3/29/2024	July 2016 - Present
		S	15%	16.82%	16	\$ 8,438,619.48	\$ 1,595,389.30		
		V	1%	0.68%	1	\$ 342,155.69	\$ 342,155.69		
		W	6%	9.52%	8	\$ 4,774,506.34	\$ 4,432,350.65		
		Agmt		31.14%	28	\$15,624,005.35	\$ 8,438,619.48		
SR 509 General Engineering Consultant Agreement Y-12197	TYPE	M	10%	7.22%	3	\$ 2,451,628.15	\$ 2,451,628.15	3/29/2024	October 27, 2018 - Present
		S	5%	41.09%	9	\$ 13,958,262.39	\$ 7,693,749.18		
		V	5%	2.38%	1	\$ 807,942.32	\$ 807,942.32		
		W	6%	11.74%	4	\$ 3,987,854.11	\$ 3,004,942.74		
		Agmt		62.43%	17	\$21,205,686.97	\$ 13,958,262.39		
	MSVWBE Program Subtotal ²	28.04%	48.40%	25		\$29,238,502	3/29/2024	July 2016 - Present	

PGM & E TOTAL (Individual Companies ¹)		28	\$29,777,925
---	--	-----------	---------------------

CONSTRUCTION										
DBE	DBE	Percentage		Companies		Date Updated	Apprentice			
		Goal	Current	#	Applied (\$)		Paid (\$)	Hours % (Goal)	Date Updated	Apprentice Hours (Training Hours) ³
		SR 167/I-5 to SR 509 - Design	15%	10.83%	8	\$ 3,469,817.85	\$ 3,469,817.85	4/2/2024	14.09%	4/4/2024
	SR 167/I-5 to SR509 - New Expressway - Construction	21%	5.90%	30	\$ 20,621,913.58	\$ 20,621,913.58				
	Project	16.73%	16.73%	38	\$ 24,091,731.43	\$ 24,091,731.43				
	DBE Program Subtotal ²			26	\$ 24,091,731.43	\$ 24,091,731.43				December 2021 - Present

MSVWBE	MSVWBE	Percentage		Companies		Date Updated	Apprentice				
		Goal	Current	#	Stacked (\$)		Paid (\$)	Hours % (Goal)	Date Updated	Apprentice Hours (Training Hours) ³	
	SR 167/70th Avenue E. Vicinity Bridge Replacement Project	TYPE	M	10%	9.20%	20	\$ 3,956,828.68	\$ 3,722,224.88	12/15/2022	18.57%	12/15/2022
S			5%	11.54%	45	\$ 4,963,862.06	\$ 391,515.80				
V			5%	0.84%	3	\$ 360,126.49	\$ 360,126.49				
W			6%	1.14%	11	\$ 489,994.89	\$ 489,994.89				
Project				22.72%	79	\$ 9,770,812.12	\$ 4,963,862.06				
	MSVWBE Program Subtotal ²	11.54%	22.72%	45		\$ 4,963,862.06				December 2019 - December 2022	

UDBE & FSBE	UDBE & FSBE	Percentage		Companies		Date Updated	Apprentice				
		Goal	Current	#	Unstacked (\$)		Paid (\$)	Hours % (Goal)	Date Updated	Apprentice Hours (Training Hours) ³	
	SR 509, I-5 to 24th Ave S. - Design	TYPE	UDBE	8%	14.72%	6	\$ 3,591,113.85	\$ 3,591,113.85	4/11/2024	12.86%	4/11/2024
FSBE			8%	1.29%	1	\$ 315,875.41	\$ 315,875.41				
Project				16.01%	7	\$ 3,906,989.26	\$ 3,906,989.26				
SR 509, I-5 to 24th Ave S. - Construction	TYPE	UDBE	10%	8.62%	31	\$ 20,823,156.72	\$ 20,823,156.72	4/11/2024	12.86%	4/11/2024	58,446
		FSBE	13%	2.60%	18	\$ 6,279,979.88	\$ 6,279,979.88				
		Project		11.22%	49	\$ 27,103,136.60	\$ 27,103,136.60				
	UDBE & FSBE Program Subtotal ²	11.66%		32		\$ 31,010,125.86				April 2020 - Present	

CONSTRUCTION TOTAL (Individual Companies ¹)		72	\$ 60,065,719.35
--	--	-----------	-------------------------

GATEWAY PROGRAM TOTAL (Individual Companies ¹)		96	\$89,843,644
---	--	-----------	---------------------

¹ For DBE Program Subtotal, A&E TOTAL, CONSTRUCTION TOTAL, and PS Gateway PROGRAM TOTAL; the calculation for these are based on each individual company on the PS Gateway Program.

² Individual companies certify on multiple TYPES (M, S, V, W) and to eliminate duplication, the 'MSVWBE Program Subtotal' only calculates the overall %, total '# of Companies', and total 'Paid (\$)' to Companies to date based on each individual company and total paid on the PS Gateway Program (exception - highlighted cell is stacked %).

³ Once Training Goals are achieved, they are no longer tracked or reported.

Megaprograms

I-405/SR 167 Corridor Program

The I-405/SR 167 Corridor Program consists of a series of long-term improvements guided by the I-405 Master Plan and SR 167 Corridor Plan. For two decades, WSDOT has worked with cities, counties, federal agencies, transit agencies and community groups to develop consensus and deliver on a long-term vision for the multimodal redevelopment of this corridor. The Master Plan incorporates more than 150 individual but coordinated projects between SR 512 in Auburn and I-5 in Lynnwood. Total funding for the program is \$4.1 billion.

Lisa Hodgson, P.E.
Program Administrator
Lisa.Hodgson@wsdot.wa.gov
206-410-0401

I-405/SR 167 Program web link

wsdot.wa.gov/construction-planning/major-projects/i-405sr-167-corridor-program



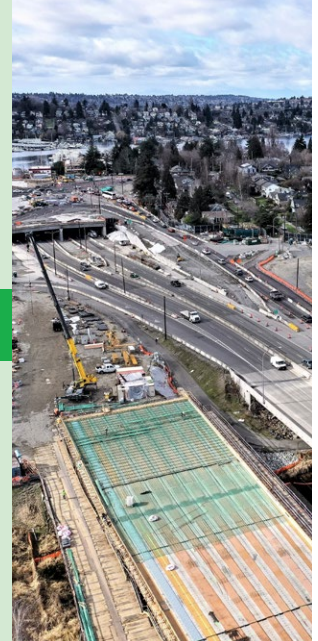
SR 520 Bridge Replacement and HOV Program

We expect to complete construction this year on both the Montlake Project and the SR 520/I-5 Express Lanes Connection Project. Meanwhile, we opened contractor bids last fall for the next major SR 520 project in Seattle: the Portage Bay Bridge and Roanoke Lid Project. We announced Skanska's \$1.375 billion proposal as having the Apparent Best Value (ABV), which exceeded our engineer's estimate. The final supplemental transportation budget in the 2024 legislative session directed us to move forward with the project, and we awarded the contract to Skanska on March 11. The budget also requires us to seek cost reduction opportunities and issue a report on our efforts by December 2024. Construction is expected to start August 2024.

Omar Jepperson, P.E., DBIA
Program Administrator
Omar.Jepperson@wsdot.wa.gov
206-409-6961

SR 520 Program web link

wsdot.wa.gov/construction-planning/major-projects/sr-520-bridge-replacement-and-hov-program



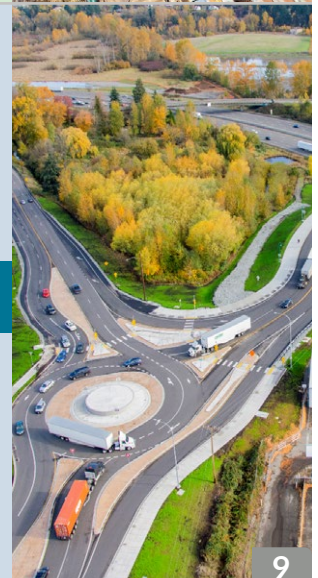
Puget Sound Gateway Program

The Puget Sound Gateway Program is building critical freight links between the ports of Seattle and Tacoma and key distribution, warehouse and industrial areas in King and Pierce counties. Composed of the SR 167 Completion Project in Pierce County and the SR 509 Completion Project in King County, the Gateway Program is building about 12 miles of new roadway to complete two crucial, unfinished links in Washington's highway and freight network. Together, the projects will help ensure that people and goods move more reliably through the Puget Sound region. Total funding is \$2.68 billion.

John White, P.E.
Program Administrator
John.White@wsdot.wa.gov
206-310-4828

Puget Sound Gateway Program web link

wsdot.wa.gov/construction-planning/major-projects/puget-sound-gateway-program

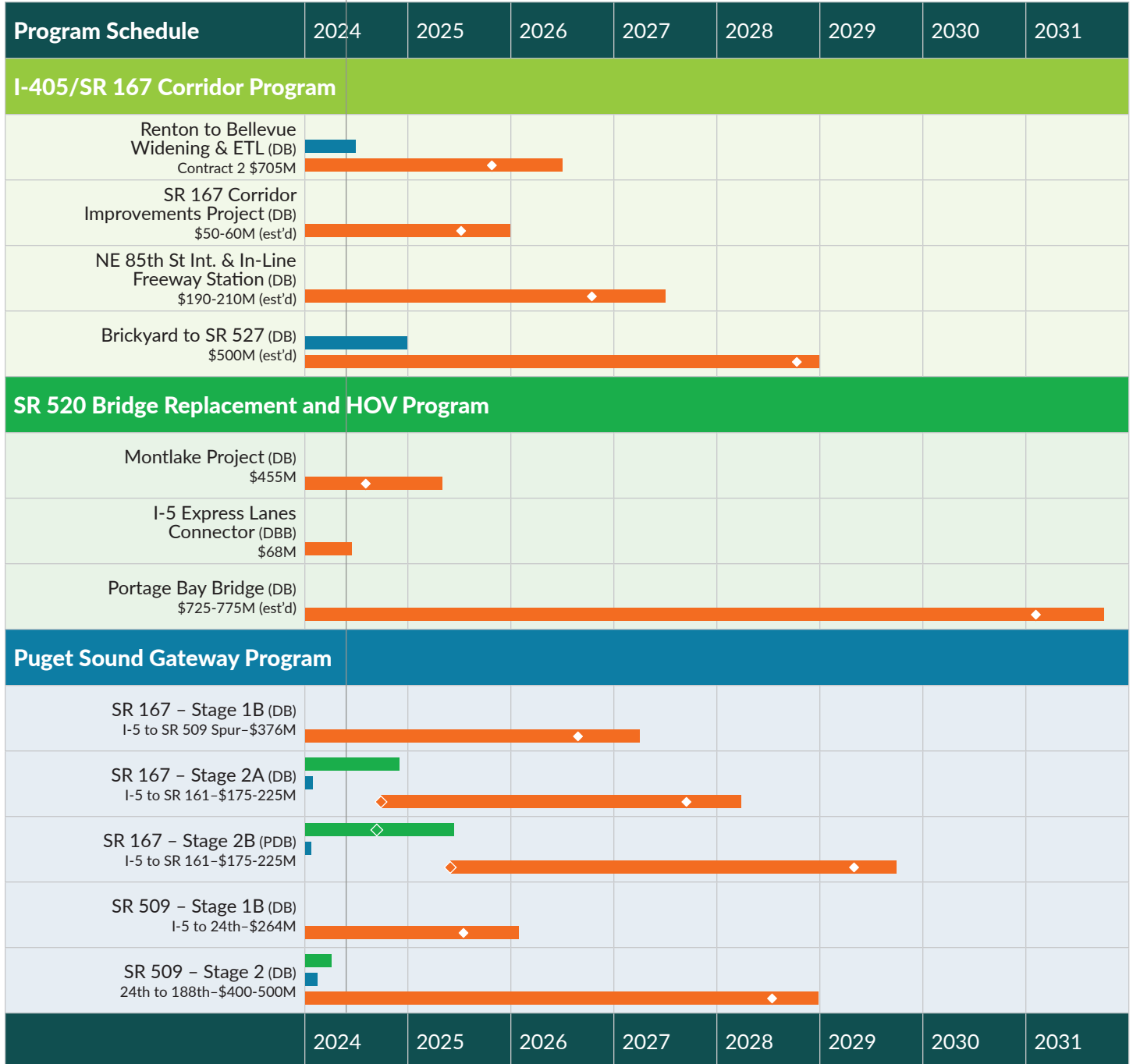


Megaprograms

Megaprograms Timeline

LEGEND PE (green), ROW (blue), WSDOT CN (orange), Other CN (grey), RFQ/AD (green diamond), Bid Opening (orange diamond), Open to Traffic (grey diamond)

WE ARE HERE ▼



Updated May 20, 2024

Title VI Notice to Public: It is the Washington State Department of Transportation's (WSDOT) policy to assure that no person shall, on the grounds of race, color, national origin, as provided by Title VI of the Civil Rights Act of 1964, be excluded from participation in, be denied the benefits of, or be otherwise discriminated against under any of its programs and activities. Any person who believes his/her Title VI protection has been violated, may file a complaint with WSDOT's Office of Equity and Civil Rights (OECR). For additional information regarding Title VI complaint procedures and/or information regarding our non-discrimination obligations, please contact OECR's Title VI Coordinator at (360) 705-7090.

Americans with Disabilities Act (ADA) Information: This material can be made available in an alternate format by emailing the Office of Equity and Civil Rights at wsdotada@wsdot.wa.gov or by calling toll free, 855-362-4ADA(4232). Persons who are deaf or hard of hearing may make a request by calling the Washington State Relay at 711.