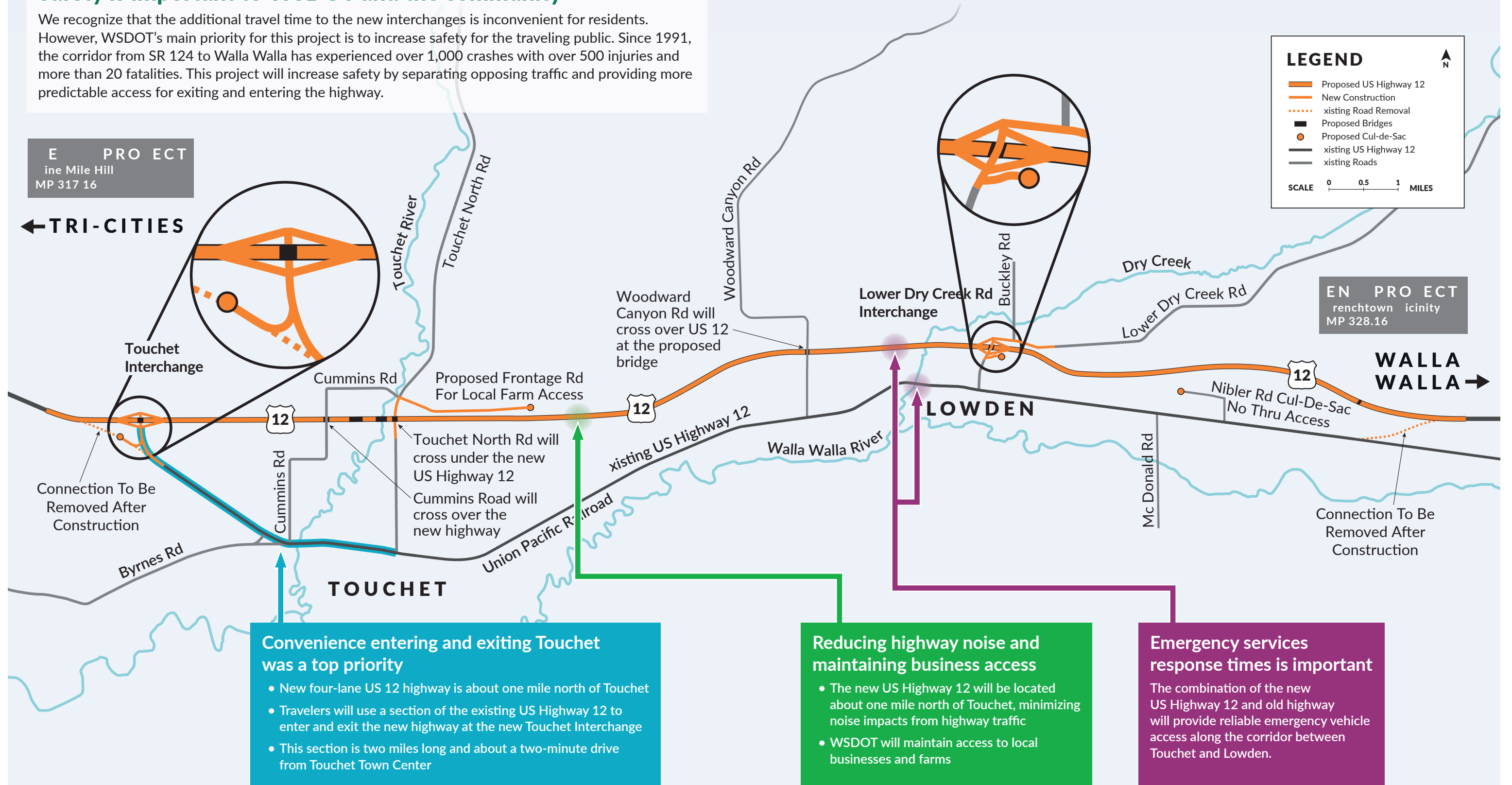


# Project Design Balances Safety and Access

## Safety is important to WSDOT and the community

We recognize that the additional travel time to the new interchanges is inconvenient for residents. However, WSDOT's main priority for this project is to increase safety for the traveling public. Since 1991, the corridor from SR 124 to Walla Walla has experienced over 1,000 crashes with over 500 injuries and more than 20 fatalities. This project will increase safety by separating opposing traffic and providing more predictable access for exiting and entering the highway.



**Convenience entering and exiting Touchet was a top priority**

- New four-lane US 12 highway is about one mile north of Touchet
- Travelers will use a section of the existing US Highway 12 to enter and exit the new highway at the new Touchet Interchange
- This section is two miles long and about a two-minute drive from Touchet Town Center

**Reducing highway noise and maintaining business access**

- The new US Highway 12 will be located about one mile north of Touchet, minimizing noise impacts from highway traffic
- WSDOT will maintain access to local businesses and farms

**Emergency services response times is important**

The combination of the new US Highway 12 and old highway will provide reliable emergency vehicle access along the corridor between Touchet and Lowden.